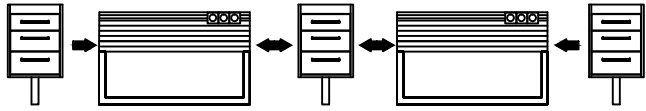
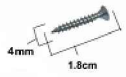


1

4x18

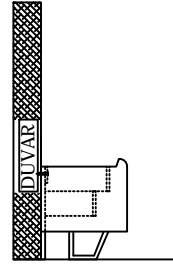


Kutulardan çıkartılan komodin ve alt gövde parçalarını 4x18 vida ile birleştiriniz.

Fix the cabinets to the lower part with 4x18 screws

2

6x80

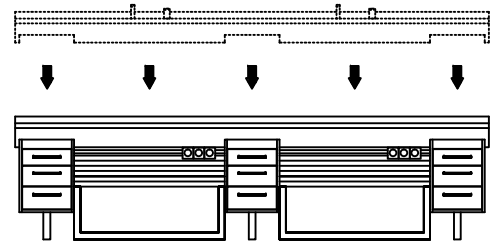


Birleştirilen alt ünite duvara 6x80 vida ile sabitleyiniz.

Mount the lower unit on the wall with 6x80 screws

3

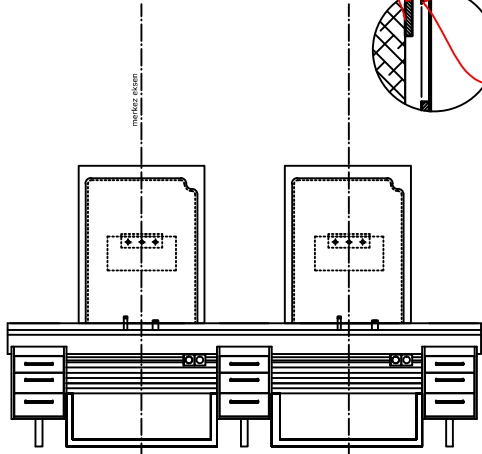
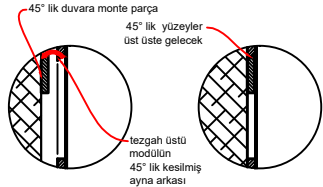
MONTAJ SEMASI
Assembly Instruction



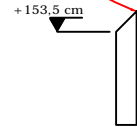
Corian tablanın ünite üstüne montajı yapılır.

The corian worktop is mounted on the counter .

4



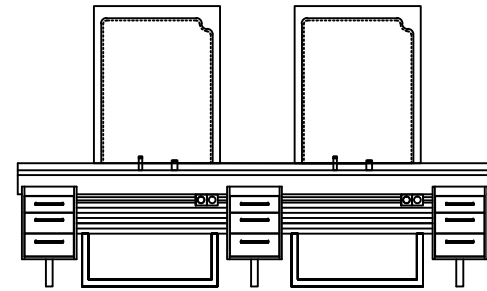
45° lik parçanın ölçü alınacağı ALT NOKTA



45° lik ahşap parçanın alt noktasından yükseklik ölçüsü alınmalıdır ki parça ile üst modül 45° lik yüzeyler üst üste otursun.

45 Degree angle from the bottom of the wooden piece should be taken from the height of the upper module at a 45-degree angle of the upper module

5



Tesisat bağlantılarını yapınız.

Make your plumbing connections now

ÜRÜN ADI:
Name of product

ET006 - ZEUS MAN

ÇİZEN:
Designer

TARİH
Date:

ÖLÇÜLER: cm (santimetre'dir)
Çizim üstünden ölçü alınmalıdır.
Measurements are in cm.